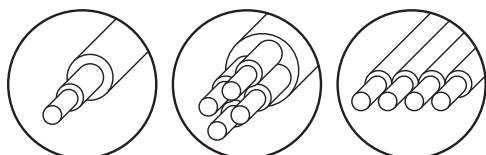


ELECTRONIC CUT,
STRIP & UNJACKET MACHINE

TSA12E



For single core,
multicore and flat cables

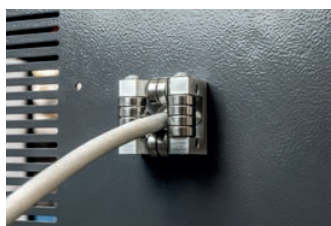


TSA12E is designed for the processing of insulated and un-insulated single core, multicore and flat cables. The machine counts the batch, measures the cutting length, strips and unjackets without needing to change blades. Through an easy-to-use control panel with a 12-inch color touchscreen display, the operator can constantly overview the work in progress, set and correct batch parameters, and receive batch information.

TSA12E is equipped for inline processing with other Samec machines, including motorized cable dereelers, prefeeders, wire markers and stackers – the machines are connected through a cable to the various interfaces, allowing signal ex-

change between machines and centralized management of emergencies.

Manufactured using high quality methods and materials, the machine guarantees long term durability. The case is constructed in welded metal and all mechanical details are treated to prevent environmental oxidation. Electronic parts are produced with reliability and functionality in mind, using high integration components, while the top quality pneumatic parts can be easily found in Europe and abroad. The electrical system conforms to EN60204-1 industry regulations.



EN / 12-2019 / Rev. 01

SAMEC MACCHINE reserves the right to modify its product contents and technical data without prior notice. This document is property of SAMEC MACCHINE in Vicenza, Italy.

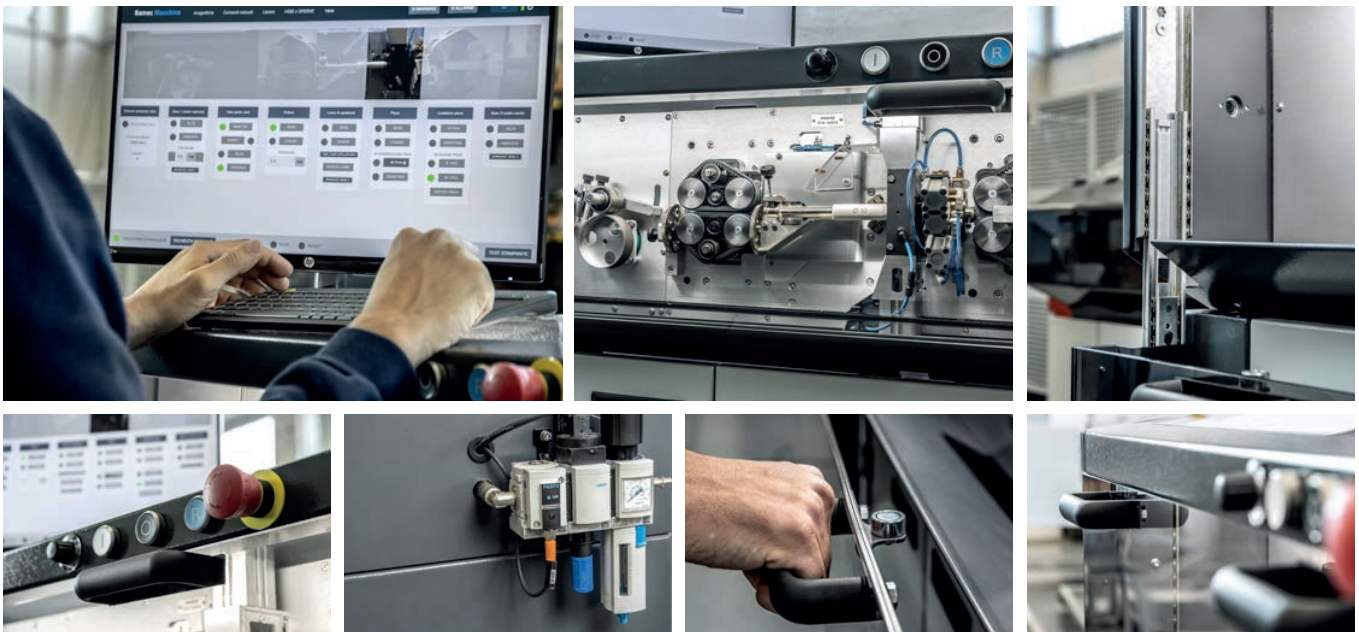

Italian Technology Quality

KM USA
WE CONNECT EVERYTHING!

KM USA LLC
6479 N M-66
Charlevoix, MI 49720

PH: (231) 237-9060
www.kmusallc.com
sales@kmcrimp.com

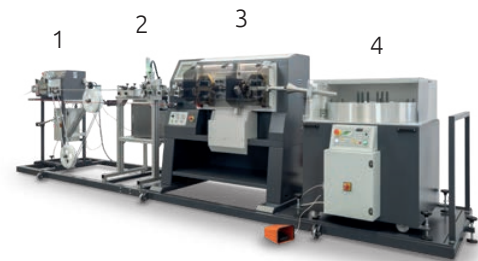
**SAMEC
MACCHINE**
wire technology solutions



Some details

TECHNICAL SPECIFICATIONS

| | |
|---------------------|--|
| Wire Length | 200mm - 500 meters (7.8in - 1640ft) |
| Wire Outer Diameter | 2mm - 11mm (0.079in- 0.43in) Optional 13mm (0.51in) |
| Wire Gauge Range | 1mm ² - 35mm ² (18AWG to 2AWG) |
| Power Supply | 230V 50/60Hz 4A Single Phase |
| Air Supply | 6 Bar |
| Dimensions | 1100L x 710W x 730H mm (43in x 28in x 29in) |
| Weight | 120kg / 264lbs |



Inline assembly example:
 1. Prefeeder
 2. Inkjet marker
 3. Cut, strip & unjacket machine
 4. Coiler

FEATURES:

- Display and Keyboard (optional Touchscreen)
- Cable length controlled via encoder
- Double Jacket Cut by rotating cable (reduces need for radius blades)
- Acceleration and deceleration ramp speeds are programmable

OPTIONS AND ACCESSORIES:

- Touchscreen Display
- Slitting Unit
- Rotary Stripping Unit
- Wire Pre-feeders
- Wire Stackers
- Coiling Units (with or without bundling)
- Inkjet Marking

EN / 12-2019 / Rev. 01

SAMEC MACCHINE reserves the right to modify its product contents and technical data without prior notice. This document is property of SAMEC MACCHINE in Vicenza, Italy.

 Italian Technology Quality



KM USA LLC
 6479 N M-66
 Charlevoix, MI 49720

PH: (231) 237-9060
 www.kmusallc.com
 sales@kmcrimp.com

